

Wallpaper*

JULY 2014

*THE STUFF THAT REFINES YOU

UK £4.99
US \$10.00
AUS \$11.00
CDN \$10.00
DKK 80.00
F € 9.00
D € 11.00
NL € 9.00
I € 9.50
J ¥ 1780
SGP \$ 18.20
E € 9.00
SEK 80.00
CHF 16.00
AED 46.00

Rising stars

The most uplifting furniture and fittings in our annual design directory

Search engine

Our finely tuned index of the world's best young architects

Simmer down

56 steaming pages of temperature-raising kitchens and bathrooms

Blessed union

Why Vitra and Artek are the perfect couple

Upward curve

High ambition at AC Milan's new HQ



ARCHITECTS DIRECTORY 2014

We assembled this year's hottest young architectural talents under the soaring glass roof of Renzo Piano's Jérôme Seydoux-Pathé Foundation's new Paris HQ

PORTRAIT: VINCENT FOURNIER

OUR GROUP OF ARCHITECTURAL
HIGH FLYERS. FOR DETAILS OF
WHO'S WHO, TURN THE PAGE





ABOVE, THIS MONTH'S LIMITED-EDITION COVER (AVAILABLE TO SUBSCRIBERS, SEE WALLPAPER.COM) BY RENZO PIANO

LEFT, WHEN COMPLETE, THE REAR OF THE JÉRÔME SEYDOUX-PATHÉ FOUNDATION HQ WILL FEATURE A TRANQUIL COURTYARD GARDEN

BELOW, OUR PHOTOGRAPHED ARCHITECTS (SEE PREVIOUS PAGE)

- 01 GRAEME LAUGHLAN**
RAW ARCHITECTURE WORKSHOP, UK
- 02 DONALD MATHESON**
MATHESON WHITELEY, UK
- 03 KATHRYN WILSON & SHANE COTTER**
ARCHITECTURAL FARM, IRELAND
- 04 JOHANNE BORTHNE & VILHELM CHRISTENSEN**
SUPERUNION, NORWAY
- 05 SYLVAIN DUBAIL & DAVID BEGERT**
DUBAIL BEGERT, SWITZERLAND
- 06 LOÏC PICQUET**
FRANCE
- 07 LEONIDAS TRAMPOUKIS & ELENI PETALOTI**
LoT, GREECE
- 08 JOSEP CAMPS & OLGA FELIP,**
SPAIN
- 09 ERHARD AN-HE KINZELBACH**
KNOWSPACE, GERMANY
- 10 SIMON STOREY**
ANONYMOUS, US
- 11 OMAR GANDHI,**
CANADA
- 12 WENDY EVANS JOSEPH & CHRIS COOPER**
COOPER JOSEPH, US

Passers-by on the Avenue des Gobelins in Paris' 13th arrondissement may notice an organic-shaped 'creature' peeking above the Auguste Rodin sculptures on the façade of No 73. Snuggled within an old city block, its rounded body is covered in aluminium scales reflecting the grey colour of Parisian rooftops. A grey roof was one thing that Sophie Seydoux, president of the Jérôme Seydoux-Pathé Foundation, insisted upon when discussing the design of the Foundation's new headquarters with its architect, Renzo Piano.

Impressed by Piano's 2006 Morgan Library extension in Manhattan, Jérôme and Sophie Seydoux went directly to the Italian architect for the Foundation's new home, to be housed in a former theatre, first built in 1869. This later became one of Paris' first cinemas in the

early 1900s, making it a perfect match for Pathé, a cinematographic legend born in 1896 and still a major player in the film industry.

The newly sited Foundation will open in September. Researchers will occupy the two upper levels, generously lit through the glass dome and clad in a warm, all-wood interior, while screening and exhibition rooms will be housed on the lower floors. There are plans to organise workshops for children to discover the materiality of movie making. Pathé's vast archives will be sandwiched in the two floors in-between, at the building's heart.

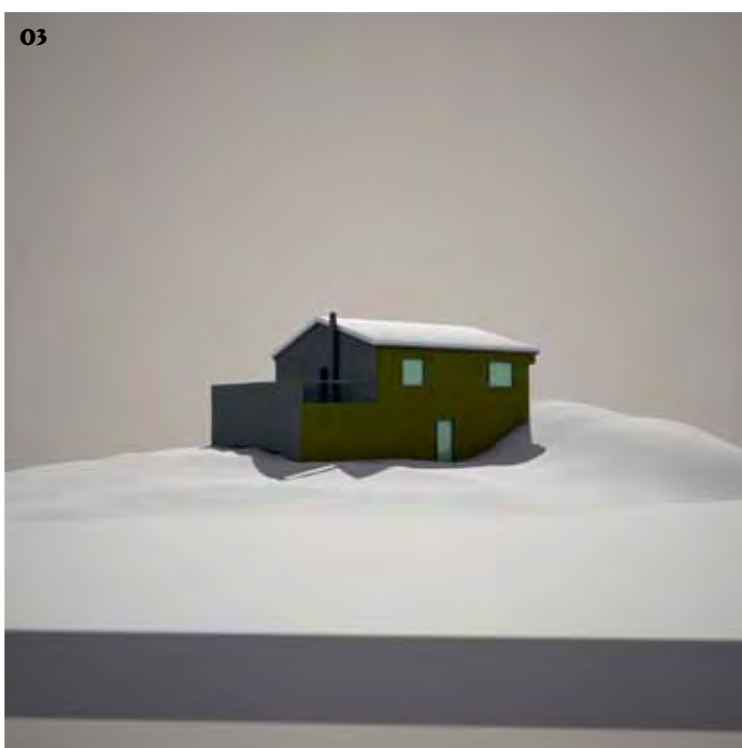
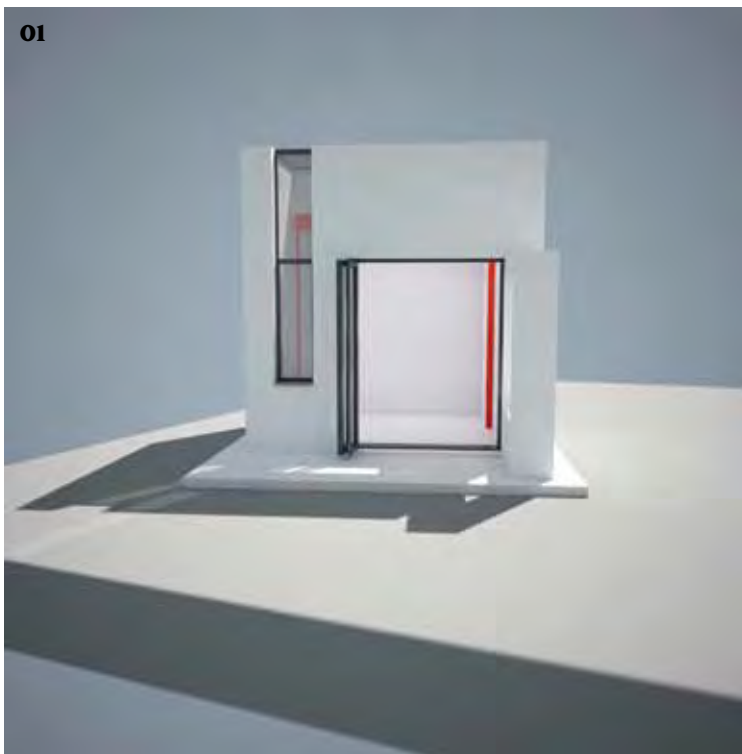
Having the entire construction process pass through the existing building's 5m-wide listed façade was among the project's major challenges. Architect Thorsten Sahlmann, who worked on both the Morgan Library and

the Foundation, explains that the building's new glass entrance facilitates the transition between the historic frontage and 'the creature'. The project's reduced footprint (the original theatre covered a larger volume) offers additional breathing space for the neighbours and a courtyard garden, while the glass dome improves natural lighting in the adjacent apartment blocks.

For our 2014 Architects Directory photo shoot, we gathered some of the world's best emerging architects under this breathtaking glass dome and, over the page, we profile the 12 photographed practices (a further eight studio profiles can be found online) with the aid of computer-generated imagery created by artist Richard Kolker. rpbw.com, fondation-jeromeseydoux-pathe.com



For more practice profiles and images, go to Wallpaper.com



01. ARCHITECTURAL FARM Ireland

Shane Cotter and Kathryn Wilson set up their practice in their home town of Dublin in 2010. Their Blackpitts project was key to the practice's development, and other work includes the refurbishment and extension of a house in Milltown, Dublin (pictured). The pair have also used their love of drawing to introduce school children to architecture by participating in workshops, which subsequently developed into the local DRAW programme. www.architecturalfarm.com

02. MATHESON WHITELEY UK

Prior to opening their firm in 2012, Donald Matheson was a project leader for Tony Fretton before working on Tate Modern's Tanks project, while Jason Whiteley spent six years at Herzog & de Meuron. A substantial amount of their workload is residential and in the arts, building galleries and studios for the likes of Martino Gamper and Max Lamb (pictured). Upcoming projects include a major media company fit-out in London's Sea Containers House. www.mathesonwhiteley.com

03. DUBAIL BEGERT Switzerland

Establishing their firm just three years after graduating from EPFL, David Begert and Sylvain Dubail have always had a hands-on approach to creating buildings that are affordable, functional and strive to elevate the ordinary in some special way. Some of their most recent projects include a Jura tourist office and the renovation and improved thermal efficiency of a two-storey 1970s house in Saignelégier (pictured), in north-west Switzerland. www.dbarch.ch

04. LOÏC PICQUET France

French architect Loïc Picquet set up his practice in Altkirch, near the Swiss and German borders, in 2012. The architect focuses his designs around three important elements: responding to a building's needs according to its locale and history, working with an open plan, and choosing the right materials. Recent work includes the Maison L (pictured), a minimalist, two-level house made of larch wood sited on a hill in the architect's home town. www.picquet-architecte.com

05. RAW ARCHITECTURE WORKSHOP, UK

After six years at Foster and Partners, Graeme Laughlan set up his London practice, completing his first new build, the House at Camusdarach Sands (pictured), last year. A stunningly bold structure, clad in black-stained wood, the house's bright interior is a stark contrast. Citing a wide range of influences, from Bobby Gillespie to Gillespie, Kidd & Coia, other projects include his Modular temporary bar solution. rawarchitectureworkshop.com



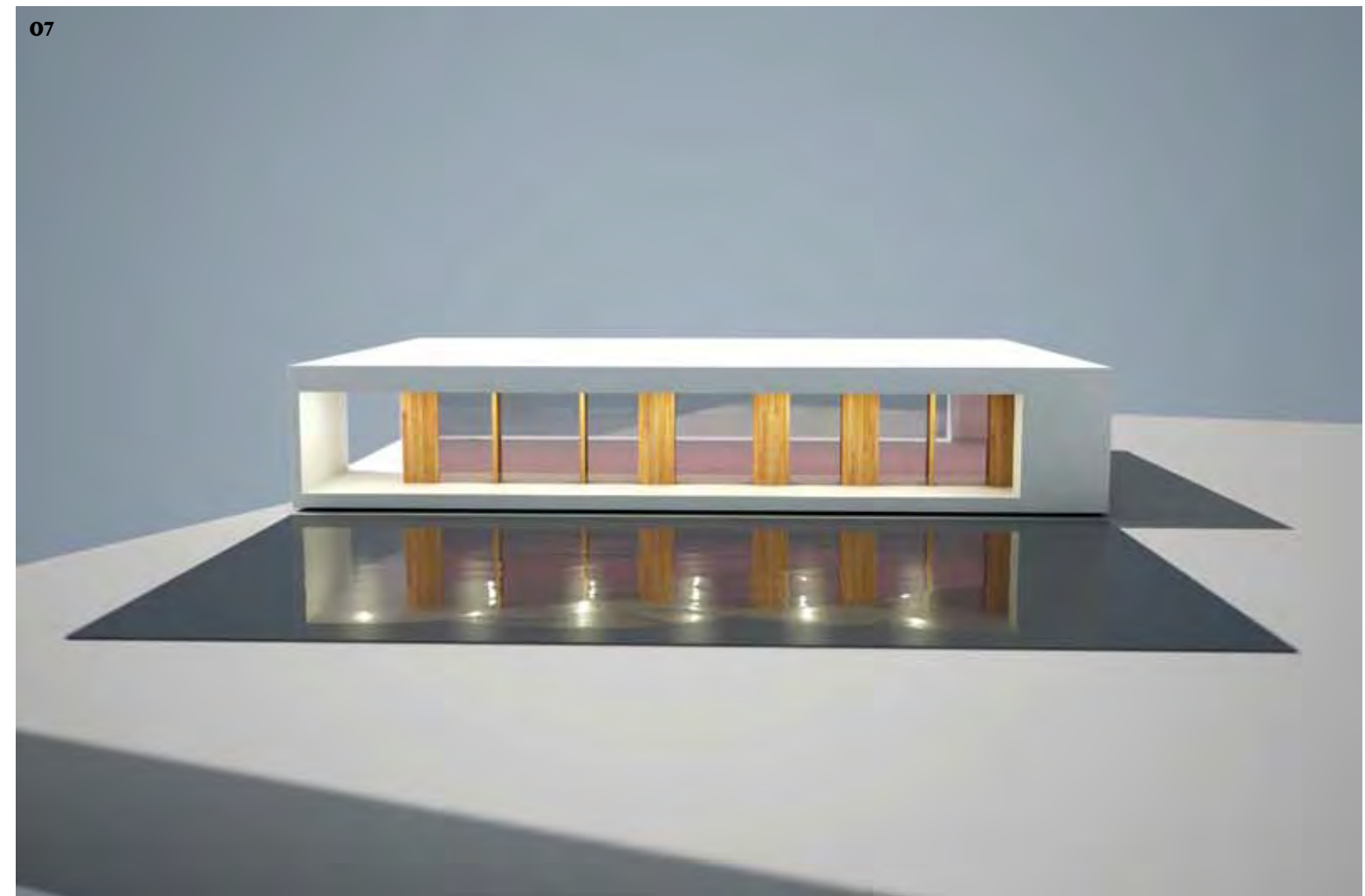
Architects Directory

06. ANONYMOUS US

New Zealand-born Simon Storey's LA practice combines a love of classic SoCal modernism with the desire to build without reusing familiar styles. Faced with plenty of steep lots in the Californian canyons, it has ample opportunity to work with light and structure. Storey describes the firm's recent Big & Small House (pictured) as 'a wonderful balance between a tiny budget and a grand living space', but his ultimate ambition is an innovative skyscraper. www.anonymousarchitects.com



07



07. JOSEP CAMPS OLGA FELIP ARQUITECTURA

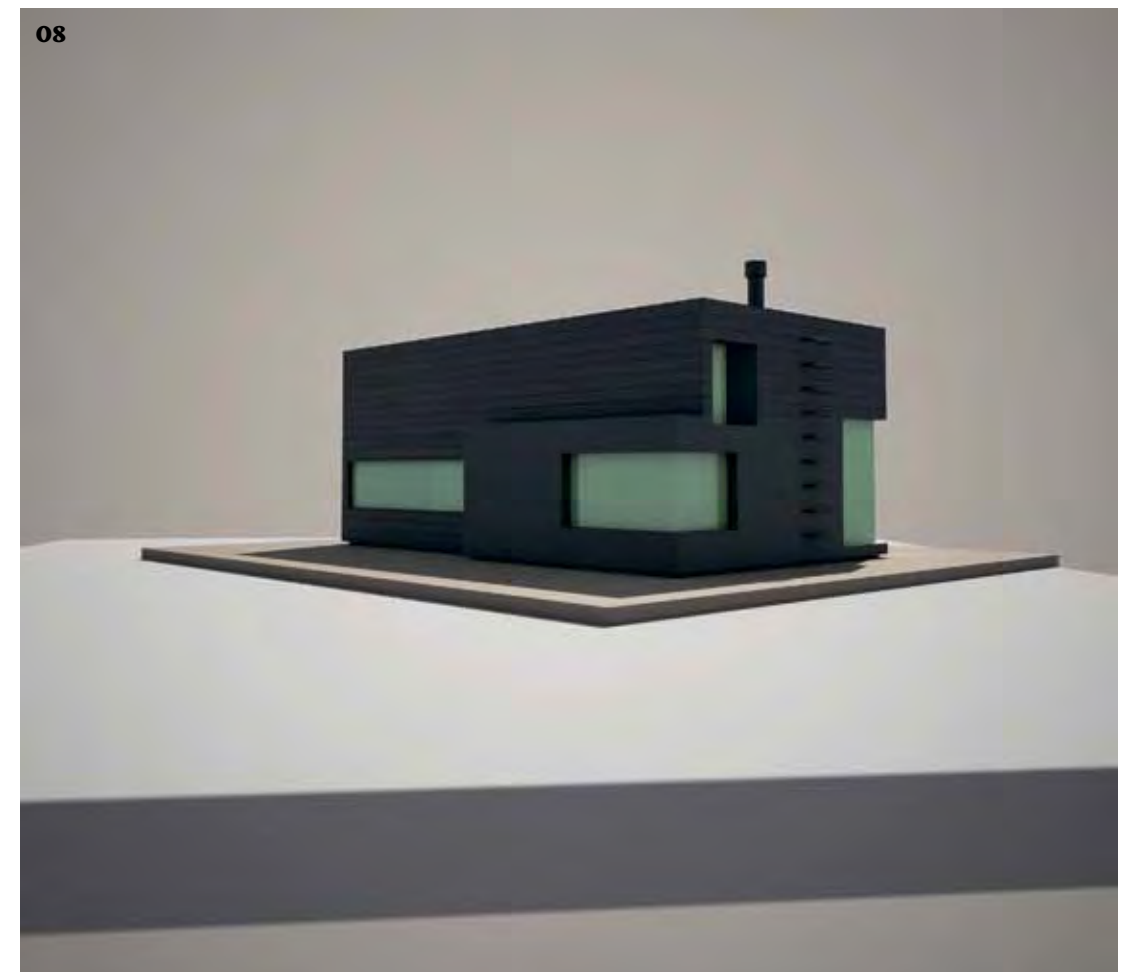
Spain

Spanish duo Olga Felip and Josep Camps founded their firm in 2006, looking to reinvent traditional Catalan culture in a contemporary way. Their civic work includes the elegantly austere health centre in L'Aldea and the Ferreries Cultural Centre, a sober structure that contrasts its dark exterior with a symphony in striated light within, while residential projects include the sleek, single-storey Villa Sifera (pictured). www.josepcampsolgafelip.net

08. COOPER JOSEPH US

Prior to setting up in New York in 2008, Chris Cooper was at SOM, while Wendy Evans Joseph was with Pei Cobb Freed. Many of the firm's projects exist at the intersection of architecture and art, such as 'Starlight', a light installation made from thousands of floating LED chips. The Writer's Studio (pictured) in upstate NY is a sublime piece of functional sculpture, while the Webb Chapel Park Pavilion in Texas resonates with a rich yellow interior. www.cooperjosephstudio.com

08



**09. KNOWSPACE****Germany**

Knowspace, says Erhard An-He Kinzelbach, 'was founded in New York, matured in Vienna and Hangzhou and currently operates from Berlin'. Its portfolio includes twin studio houses for two artists in Songzhuang (pictured) and a courthouse building in St Pölten. Each project's conflicts are a big part of what drives Kinzelbach's design process, as do the architect's mentors, who over the years have included Farshid Moussavi and Wang Shu.

www.knowspace.eu

10. SUPERUNION**Norway**

Vilhelm Christensen and Johanne Borthne's Oslo practice has a multidisciplinary approach that has won them a nomination for Norsk Form's Prize for Young Architects, and the opportunity to design for Norway's acclaimed National Tourist Routes project. Recent works include a house extension in the Ekeberg hills (pictured). Plus, their proposal for a Disaster Prevention Centre in Istanbul piqued the interest of rapper Kanye West.

www.superunion.no

11. LoT**Greece**

Founded in 2011 by the Columbia University-trained Leonidas Trampoukis and Eleni Petaloti, LoT is about to complete one of its biggest residential projects to date, the Cubic Housing (pictured) in Thessaloniki, which has been welcomed as the best project of the year by the local architecture press. Different materials, light and colour patterns are all part of the office's pool of inspiration, contributing to its growing cross-disciplinary portfolio.

lot-arch.com

12. OMAR GANDHI**Canada**

The architecture office of Halifax-based Omar Gandhi may be young - founded only four years ago - yet its design skills and confidence speak volumes. The Moore Studio in Hubbards, Nova Scotia, sits among Gandhi's favourite projects, but he has worked on a number of beautifully designed single-family houses - both main homes and holiday retreats, including the Black Gables live/work studio (pictured) in Cape Breton, Nova Scotia.

omargandhi.com

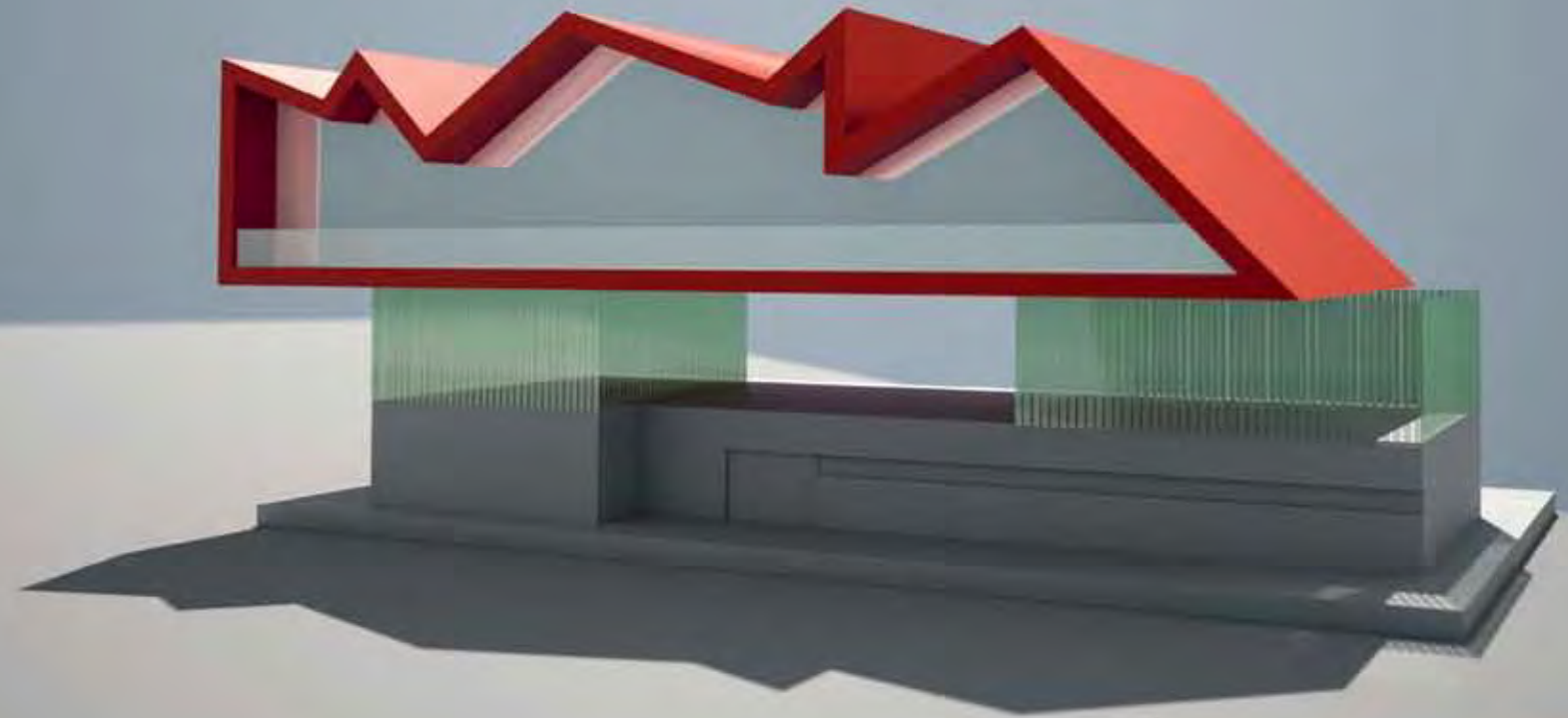
FUTURE CAPITAL

13-30 June

The exhibition 'Future Capital: The 2014 Wallpaper* Architects Directory' (for venue, see Wallpaper.com) will present this year's architect selection through artwork by Richard Kolker and feature a bespoke ceramic installation in association with Ceramics of Italy. The show is part of the London Festival of Architecture.

Also featuring

The exhibition will include eight more practices, including BXB Studio, whose Artist's House is pictured below. For a profile of the studio, plus the seven other practices (Salad, Sundaymorning, Rizoma Architettura, Haberstroh Architekten, Arquitectos Matos, A-CH, and HLPS Arquitectos), visit Wallpaper.com



In association with



Ceramics of Italy